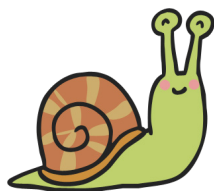
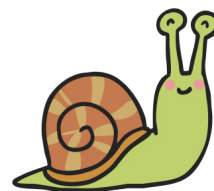


A gardener moves you from her lettuces. Move back 3 spaces.



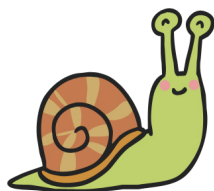
twinkl.com

Move back 2 spaces.



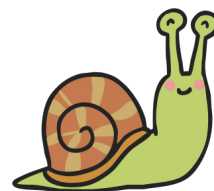
twinkl.com

Oh no! A blackbird eats you! Go back to the start.



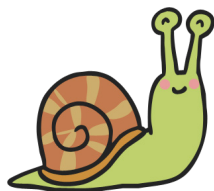
twinkl.com

Too slow snail!  
Miss a turn.



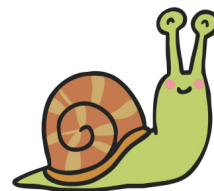
twinkl.com

Move back 1 space.



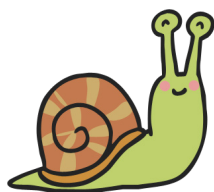
twinkl.com

Roll the dice again.



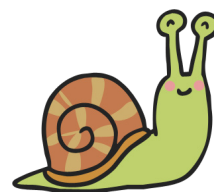
twinkl.com

Move forwards 2 spaces.



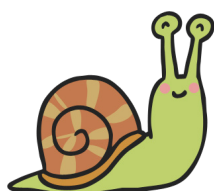
twinkl.com

There has been some lovely rain.  
Move forwards 3 spaces.



twinkl.com

Move forwards 1 space.



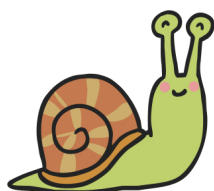
twinkl.com

Choose a friend to move on 2 spaces.



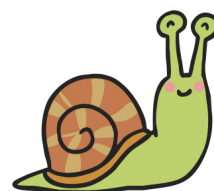
twinkl.com

You find something delicious to eat.  
Move forwards 4 spaces.



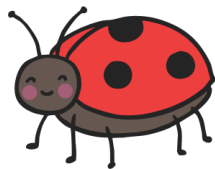
twinkl.com

Pick a ladybird card.



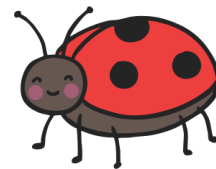
twinkl.com

You use your ladybird wings!  
Fly forwards 2 spaces.



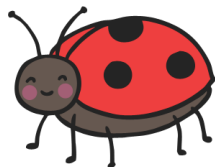
twinkl.com

You use your ladybird wings!  
Fly forwards 3 spaces.



twinkl.com

Move forwards 1 space.



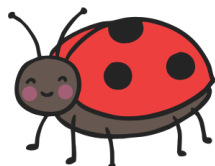
twinkl.com

You find some delicious aphids to eat. Roll again!



twinkl.com

Choose a friend to move forwards 3 spaces.



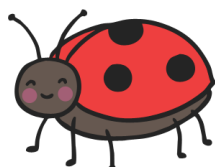
twinkl.com

You find a good place to hide from predators. Miss a turn.



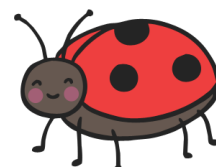
twinkl.com

Pick a slug card.



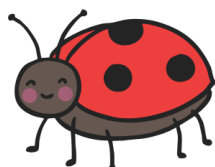
twinkl.com

Move back 1 space.



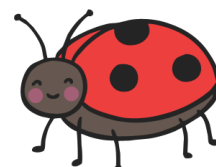
twinkl.com

Move back 2 spaces.



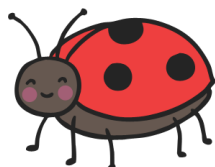
twinkl.com

Move back 3 spaces.



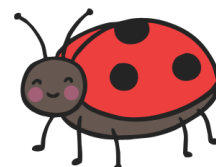
twinkl.com

Oh no! A frog eats you! Go back to the start.



twinkl.com

Choose another ladybird card.



twinkl.com